



**St. Mary  
Magdalene**  
*C of E Primary School*

Love to learn, learn to love

Issue 2 11.10.24

[www.st-marymagdalene.sandwell.sch.uk](http://www.st-marymagdalene.sandwell.sch.uk)

0121 588 2371    [headteacher@st-](mailto:headteacher@st-marymagdalene.sandwell.sch.uk)

[marymagdalene.sandwell.sch.uk](http://marymagdalene.sandwell.sch.uk)



**Love to Learn, Learn to Love.**

Dear parents and carers,

The children had a wonderful time at the Harvest Festival in Church. I hope you were able to join them. Thank you for your donations to the Food Bank. They were gratefully received.



Kindest regards

Mrs Robinson

Up coming Workshops

## Attendance week commencing 31//9/2024

Whole School	Nursery	Reception	Year 1	Year 2	Year 3	Year 4	Year 5	Year 6
93.1%	88.8%	92.6%	93.4%	88.7%	94%	98.7%	91%	94%

### Attendance record and lessons missed

- 95% attendance means 50 missed lessons. This means a child missed about 10 days or 2 weeks of lessons in the school year.
- 90% attendance means 100 missed lessons. This means a child misses four weeks of lessons in the school year.
- 85% attendance means 150 missed lessons. This means the child misses almost 6 weeks of lessons in the school year
- 80% attendance means 200 missed lessons. This means the child misses over 7 weeks of lessons in the school year
- 75% attendance means 250 missed lessons. This means the child misses about 9 weeks of lessons in the school year

### Punctuality

- Arriving 5 minutes late every day adds up to over 3 days lost each year, that's 20 lessons missed
- Arriving 15 minutes late every day adds up to 2 weeks absence a year, that's 55 lessons missed
- Arriving 30 minutes late every adds up to 19 days absence a year, that's 123 lessons missed

### Speech and Language Support

**Thank you to all the parents who attended the workshops held by Sophie Kingston, our Speech and Language Therapist. I hope you found the sessions useful.**

## Uniform

Please ensure that your child is wearing the correct uniform everyday.

This includes their PE Kit. Our uniform is widely available at reasonable prices in all major supermarkets. Please let us know if you are experiencing difficulties as we have uniform in school.

Thank you for your donations of uniform- we now have enough to last for sometime. Please don't send in any further donations until requested.



We are very excited to be supporting Guide Dogs for the Blind.

Every day 250 people start to lose their sight in the UK. There are 2 million people living with sight loss in the UK.

Each class are holding a name the puppy competition. Each entry costs £2.

For those of us who are not lucky enough to win, the puppies can be bought from <https://guidedogsshop.com> at a cost of £8

We will also be welcoming a guide dog in to school to meet the children.

## Keep water beads away from young children



Children love water beads. But it's really dangerous if a young child swallows them.



They expand in the belly and can block the bowel. Some grow as big as golf balls.

A child may need major surgery to remove them. So please keep them away from young children.



If you suspect a child has swallowed a water bead, get medical help straight away.

Scan to learn more

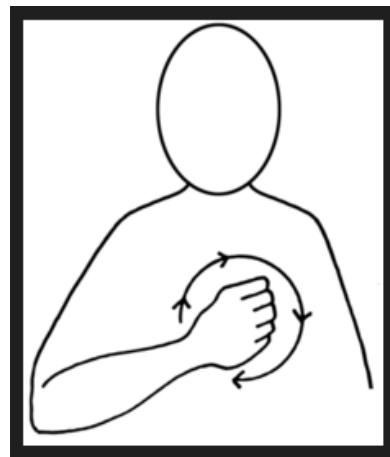


[www.capt.org.uk](http://www.capt.org.uk)

[@ChildAccidentPreventionTrust](https://www.facebook.com/ChildAccidentPreventionTrust)

[@capt\\_charity](https://www.instagram.com/capt_charity)

This is the MAKATON sign for Sorry



The Knife Angel campaign is a powerful movement aimed at raising awareness about knife crime, promoting peace, and fostering community cohesion. Social media plays a crucial role in amplifying this message and engaging communities across the UK.



-  Website: [www.sandwell.gov.uk/KnifeAngel](http://www.sandwell.gov.uk/KnifeAngel)
-  Email: [Community\\_SafetyTeam@sandwell.gov.uk](mailto:Community_SafetyTeam@sandwell.gov.uk)
-  Facebook: [www.facebook.com/sandwellcouncil](http://www.facebook.com/sandwellcouncil)
-  X: [@SandwellCouncil](https://twitter.com/SandwellCouncil)
-  Instagram: [@SandwellCouncil](https://www.instagram.com/SandwellCouncil)



**Struggling with the cost of living?**

We can help...

Our cost of living advisers offer free support with:

**Benefits    Budgeting    Debt**  
**Employment    Energy**



Sandwell Parents for Disabled Children  
Galton Valley Childrens Centre  
Great Arthur St  
Smethwick, B66 1DH  
Sessions starting Tuesday 9<sup>th</sup> April 2024  
9.30am to 1.00pm



## Cost of Living Team

**Tuesdays throughout October**  
**Galton Valley Childrens Centre, Great Arthur Street, Smethwick, B66 1DH**

The cost of living Team are continuing with services on Tuesdays at SPDC HQ for the time being! Don't worry if you have not received your migration letter for universal credit.....be ahead of the game and beat the queues!

The team also support with issues like debt, energy bills and budgeting.

Please call 0121 565 2410 to book your place.

West Bromwich Police Station

Moor St

West Bromwich

B70 7AQ

Tel: 101

Email: [sandwell\\_partnerships@west-midlands.pnn.police.uk](mailto:sandwell_partnerships@west-midlands.pnn.police.uk)

Dear Parent/Guardian,

It's that time of year again where communities will soon be enjoying celebrations including Halloween, Diwali and Bonfire night. Children and young people will break up from school this week and whilst this provides an opportunity for families and friends to spend some enjoyable time together, I want to remind you all of the dangers that this busy period poses. The darker nights will soon be upon us, so ask yourself if you know where your child is going, who they are with and what they are doing.

Fireworks provide wonderful entertainment as part of an organised display. They can, however, be very dangerous when used inappropriately. Remember that in order to buy fireworks you must be over the age of 18 and they can only be purchased from registered retailers. Please remind your child of this: any child or young person found in possession of, or letting off fireworks in public commits a criminal offence. More importantly, they also place themselves and members of the public in unnecessary danger.

Also, please be mindful of the vulnerable members of our community who may be fearful at this time of year. I would ask you to ensure that your child does not cause unnecessary distress through their actions, whether by involving themselves in anti-social behaviour or associating with those engaging in such behaviour.

Sandwell Police are very proud of our relationship with the young people of Sandwell and our wider communities. We encourage families to spend time with each other and enjoy the celebrations.

At the same time I would ask you, as parents/guardians, to ensure that the whole of Sandwell can enjoy this time together, and that the actions of a few do not spoil the enjoyment of many. If we all ensure our own child is safe then we can be sure others are safe too.

2024

Rated OUTSTANDING by Ofsted for  
Quality of Education!



# KEVI Handsworth Grammar School for Boys Open Mornings

If your son sat the 11+ last month and you are still considering your school options, we would like to invite you to our Open Mornings on...

**Tuesday 22nd  
and Wednesday  
23rd October  
from 10am!**



if you would like to attend one of our  
Open Mornings please email:

[enquiry@handsworth.bham.sch.uk](mailto:enquiry@handsworth.bham.sch.uk)

Grove Lane, Handsworth, B21 9ET

